

**Case Report**

Cystic metastatic squamous cell carcinoma - A case report

Anchal Bhola¹, Gunvanti Rathod^{2*}, RK Tandan³¹P.G. Student, ²Assistant Professor, ³Professor

Pathology Department, SBKS MI & RC, Sumandeep Vidyapeeth, Vadodara, India

*Corresponding author email: neempath@gmail.com**How to cite this article:** Anchal Bhola, Gunvanti Rathod, RK Tandan. Cystic metastatic squamous cell carcinoma - A case report. IAIM, 2015; 2(5): 195-199.**Available online at www.iaimjournal.com****Received on:** 02-04-2015**Accepted on:** 30-04-2015**Abstract**

Fine-needle aspiration cytology (FNAC) has been shown to be very useful in the preoperative evaluation of neck masses. Cystic change in metastatic lymph nodes occurs in certain types of tumors and it is an unexplained, site-specific phenomenon that mostly happens in the lymph nodes of head and neck region. It is suggested that cases of cystic squamous carcinoma metastases to cervical lymph nodes may be determined by cytological examination of fine needle aspirates. The importance of interpretation of fine needle aspiration cytology by an experienced cytologist is emphasized to avoid the possibility of excising metastatic squamous cell carcinomas, which could lead to unnecessary surgical procedures such as radical neck dissection.

Key words

Fine-needle aspiration cytology, Lymph nodes, Metastatic squamous cell carcinomas.

Introduction

Cystic change in metastatic lymph nodes occurs in certain types of tumors and it is an unexplained, site-specific phenomenon that mostly happens in the lymph nodes of head and neck region. It is also found with decreasing frequency in the inguinal, axillary and supraclavicular regions. Metastatic disease to the lymph nodes of the neck is an important clinical and pathologic consideration. FNA is a reliable procedure in the determination of the

malignancy within the cyst. It is suggested that cases of cystic squamous carcinoma metastases to cervical lymph nodes may be determined by cytological examination of fine needle aspirates [1, 2]. Here we have presented a case of the neck mass which was diagnosed as cystic metastatic SCC on FNAC.

Case report

A 53 years old male patient presented to surgery outdoor patient department (OPD) with 6×5 cm

right upper neck mass located just below to ear lobule for 3 months. **(Photo – 1)** His physical examination revealed a palpable, non-pulsatile, partially cystic partially solid mass which was fixed to the underlying structures at posterior aspect of right mandibular angle. FNAC was advised by the clinicians and it was performed at cytology clinic using a 22-gauge needle attached to a 10 ml syringe [3-11]. On aspiration, 35 ml dirty turbid fluid was aspirated **(Photo – 2)** and the procedure was repeated from the solid area of the swelling. The smears were stained with Pap and hematoxylin and Eosin (H & E) stain. The microscopic examination revealed sheets of malignant squamous cells with presence of marked anaplasia and many abnormal mitotic figures. **(Photo – 3)** There was also presence of extracellular keratin material along with nucleated squames. **(Photo – 4)** The smears from the fluid showed plenty of neutrophils and malignant squamous cells with presence of tumor giant cells. **(Photo – 5)** Overall cytomorphological features were that of metastatic squamous cell carcinoma.

Photo – 1: Right upper neck mass.



Photo – 2: Aspirated fluid.



Photo – 3: Sheets of malignant squamous cells. (40X, H & E Stain)

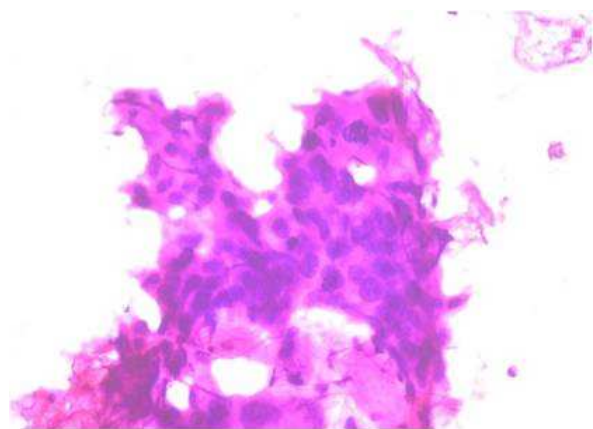


Photo – 4: Presence of extracellular keratin material along with nucleated squames. (40X, H & E Stain)

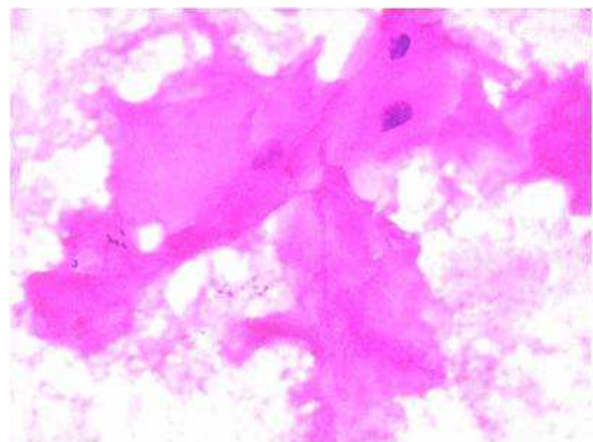
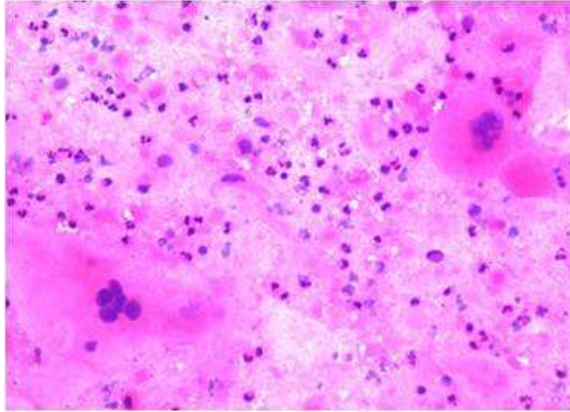


Photo – 5: Plenty of neutrophils, malignant squamous cells with presence of tumor giant cells. (20X, H & E Stain)



Discussion

Fine-needle aspiration (FNA) cytology has been shown to be very useful in the preoperative evaluation of neck masses [12]. Fine-needle aspiration cytology is an accurate technique for evaluating enlarged, solid, cervical nodes with very low (1-3%) false-positive and false-negative rates [13]. However, in cystic lesions, it may be difficult, or sometimes impossible, to distinguish between benign and malignant squamous cells in aspirates [14, 15], on the one hand, this diagnostic dilemma is related to reactive squamous atypia secondary to superimposed super imposed inflammation; this atypia can closely simulate a squamous malignancy [16]. Conversely, metastatic SCC may be well differentiated and display cytologically bland features that mimic benign lesions, such as keratinous cysts or epidermal inclusion cysts [17].

Cystic SCC in metastatic cervical lymph nodes is now considered as a typical presentation of SCC arising in the oro/nasopharynx [18]. Cystic SCC metastasis are generally not associated with the usual risk factors of smoking and alcohol abuse [19], and they often present in a younger patient population than those with solid metastatic SCC

[20]. Primary SCC tumors that produce these malignant cysts often do so very early, at times discovered before presentation of a primary tumor itself. The mechanism of cyst formation in cystic metastases has not been fully explained [15, 18, 21, 22]. It has been suggested that this phenomenon is secondary to pseudo cystic change and results from spontaneous degradation of keratin and cellular debris within the carcinomatous lymph node deposit [2]. Probably cyst formation in these cases could also be related to the sudden blockage of lymphatic flow passing through a node that has metastatic colony. This lymphatic fluid fills a potential space, which have tumor cells in periphery. [23]

Detecting malignancy within a cyst can be difficult for a variety of reasons. Imaging such as CT, MRI, and ultrasonography and more recently positron emission tomography (PET)/CT25 can detail the size and morphology of cervical lymph nodes. Although these imaging techniques can show suggestive features of malignancy, they are often inconclusive, and the absence of a clinically detectable primary tumor makes the diagnosis more difficult.

Sheahan, et al. [24] found FNA to be a helpful tool in the assessment of cystic metastatic lesions, citing a sensitivity of 73% in the diagnosis of malignancy. A false-negative FNA cytology finding is likely to delay both the search for a primary tumor and adequate therapy. In contrast, the consequences of a false-positive diagnosis of metastatic SCC on FNA may include unnecessary surgical procedures such as radical neck dissection.

Conclusion

We can conclude that diagnosis of cystic metastatic SCC is difficult by imaging techniques. CT, MRI, and ultrasonography can show suggestive features of malignancy. FNAC is quite



useful and highly sensitive tool for the diagnosis but the cytological appearances of an FNA sample may require interpretation by an experienced cytologist.

References

1. Burgess KL, Hartwick RW, Bedard YC. Metastatic squamous carcinoma presenting as a neck cyst. Differential diagnosis from inflamed branchial cleft cyst in fine needle aspirates. *Acta Cytol*, 1993; 37(4): 494-8.
2. Verma K, Mandal S, Kapila K. Cystic change in lymph nodes with metastatic squamous cell carcinoma. *Acta Cytol*, 1995; 39(3): 478-80.
3. Rathod GB, Ghadiya V, Shinde P, Tandan RK. Pleomorphic sarcoma in 60 years old male – A case report. *International Journal of Current Microbiology and Applied Sciences*, 2014; 3(8): 510-517.
4. Gunvanti Rathod, Pragnesh Parmar, Sangita Rathod, Ashish Parikh. Suprascapular malignant fibrous histiocytoma – A case report. *Discovery*, 2014, 12(31): 50-53.
5. Rathod GB, Goyal R, Bhimani RK, Goswami SS. Metaplastic carcinoma of breast in 65 years old female - A case report. *Medical Science*, 2014; 10(39): 77-81.
6. Disha Singla, Gunvanti Rathod. Cytodiagnosis of renal cell carcinoma – A case report. *IAIM*, 2015; 2(2): 133-137.
7. Gunvanti Rathod, Pragnesh Parmar. Fine needle aspiration cytology of swellings of head and neck region. *Indian Journal of Medical Sciences*, 2012; 66: 49-54.
8. Gunvanti Rathod, Sangita Rathod, Pragnesh Parmar, Ashish Parikh. Diagnostic efficacy of fine needle aspiration cytology in cervical lymphadenopathy – A one year study. *International Journal of Medical and Pharmaceutical Sciences*, 2014; 4(5): 1-8.
9. Mobeen Alwani, Gunvanti B. Rathod. Diagnosis of anaplastic thyroid carcinoma on fine needle aspiration cytology - A rare case report. *IAIM*, 2015; 2(3): 183-187.
10. Annie Jain, Gunvanti Rathod. Oncocytoma of parotid gland: A rare case report. *IAIM*, 2015; 2(4): 166-169.
11. Nupur Singla, Gunvanti Rathod, Disha Singla. Adenoid cystic carcinoma of the parotid gland - A case report and review of literature. *IAIM*, 2015; 2(4): 182-186.
12. van den Brekel MW, Castelijns JA, Stel HV, et al. Occult metastatic neck disease: Detection with US and US guided fine needle aspiration cytology. *Radiology*, 1991; 180: 457-61.
13. Engzell U, Jakobsson PA, Sigurdson A, Zajicek J. Aspiration biopsy of metastatic carcinoma in lymph nodes of the neck. A review of 1101 consecutive cases. *Acta Otolaryngol*, 1971; 72: 138-47.
14. Engzell U, Zajicek J. Aspiration biopsy of tumors of the neck. I. Aspiration biopsy and cytologic findings in 100 cases of congenital cysts. *Acta Cytol*, 1970; 14: 51-7.
15. Granstrom G, Edstrom S. The relationship between cervical cysts and tonsillar carcinoma in adults. *J Oral Maxillofac Surg*, 1989; 47: 16-20.
16. Burgess KL, Hartwick RW, Bedard YC. Metastatic squamous carcinoma presenting as a neck cyst. Differential diagnosis from inflamed branchial cleft cyst in fine needle aspirates. *Acta Cytol*, 1993; 37: 494-8.
17. Thompson HY, Fulmer RP, Schnadig VJ. Metastatic squamous cell carcinoma of the tonsil presenting as multiple cystic neck masses. Report of a case with fine



- needle aspiration findings. *Acta Cytol*, 1994; 38: 605-7.
18. Regauer S, Mannweiler S, Anderhuber W, Gotschuli A, Berghold A, Schachenreiter J. Cystic lymph node metastases of squamous cell carcinoma of Waldeyer's ring origin. *Am J Surg*, 1999; 79(9-10): 1437-42.
 19. Soh KB. Branchiogenic carcinomas: Do they exist? *J R Coll Surg Edinb*, 1998; 43: 1-5.
 20. Bath AP, Murty GE, Bradley PJ. Branchial cyst - to endoscope or not? *J Laryngol Otol*, 1992; 106: 1006-1007.
 21. Micheau C, Cachin Y, Caillou B. Cystic metastases in the neck revealing occult carcinoma of the tonsil. A report of six cases. *Cancer*, 1974; 33: 228-233.
 22. Micheau C, et al. So-called branchiogenic carcinoma is actually cystic metastases in the neck from a tonsillar primary. *Laryngoscope*, 1990; 100: 878-883.
 23. Goldenberg D, Begum S, Westra WH, Khan Z, Sciubba J. Cystic lymph node metastasis in patients with head and neck cancer: An HPV-associated phenomenon. *Head Neck*, 2008, **30**: 898-903.
 24. Sheahan P, et al. Cystic cervical metastases: Incidence and diagnosis using fine needle aspiration biopsy. *Otolaryngol Head Neck Surg*, 2002; 127: 294-298.

Source of support: Nil

Conflict of interest: None declared.